

DOI: [10.29026/oea.2022.210024](https://doi.org/10.29026/oea.2022.210024)

Silicon cuboid nanoantenna with simultaneous large Purcell factor for electric dipole, magnetic dipole and electric quadrupole emission

Qiurong Deng, Jianfeng Chen, Li Long, Baoqin Chen, Huakang Yu and Zhiyuan Li*

The Purcell effect is commonly used to increase the spontaneous emission rate by modifying the local environment of a light emitter. Here, we propose a silicon dielectric cuboid nanoantenna for simultaneously enhancing electric dipole (ED), magnetic dipole (MD) and electric quadrupole (EQ) emission. We study the scattering cross section, polarization charge distribution, and electromagnetic field distribution for electromagnetic plane wave illuminating the silicon dielectric cuboid nanoantenna, from which we have identified simultaneous existence of ED, MD and EQ resonance modes in this nanoantenna. We have calculated the Purcell factor of ED, MD and EQ emitters with different moment orientations as a function of radiation wavelength by placing these point radiation source within the nanoantenna, respectively. We find that the resonances wavelengths of the Purcell factor spectrum are matching with the resonance modes in the nanoantenna. Moreover, the maximum Purcell factor of these ED, MD and EQ emitters is 18, 150 and 118 respectively, occurring at the resonance wavelength of 475, 750, and 562 nm, respectively, all within the visible range. The polarization charge distribution features allow us to clarify the excitation and radiation of these resonance modes as the physical origin of large Purcell factor simultaneously occurring in this silicon cuboid nanoantenna. Our theoretical results might help to deeply explore and design the dielectric nanoantenna as an ideal candidate to enhance ED, MD and EQ emission simultaneously with very small loss in the visible range, which is superior than the more popular scheme of plasmonic nanoantenna.

Keywords: dielectric nanostructure; spontaneous emission; resonance; Purcell effect

Deng QR, Chen JF, Long L, Chen BQ, Yu HK et al. Silicon cuboid nanoantenna with simultaneous large Purcell factor for electric dipole, magnetic dipole and electric quadrupole emission. *Opto-Electron Adv* 5, 210024 (2022).

Introduction

Spontaneous emission (SE) of quantum emitters, such as molecules, rare earth ions, and quantum dots into free space, is a key phenomenon across the whole area of quantum optics. The control of spontaneous emission is a critical step in designing various optical elements and devices, such as nanoantenna, hyperbolic metamaterial, light-emitting diode, single-photon sources, nano-lasers,

and signals detection¹⁻⁸. As first demonstrated by E.M. Purcell in 1946 in the context of nuclear magnetic resonance, the Purcell effect describes that the spontaneous emission of a quantum emitter is not an intrinsic property of the emitter, but can be modified by its interaction with environment⁹. The Purcell factor is used to evaluate the enhancement extent of the SE rate by the emitters. Strong Purcell effect is usually accomplished by placing

School of Physics and Optoelectronics, South China University of Technology, Guangzhou 510641, China.

*Correspondence: ZY Li, E-mail: phzyli@scut.edu.cn

Received: 17 February 2021; Accepted: 18 May 2021; Published online: 28 February 2022



Open Access This article is licensed under a Creative Commons Attribution 4.0 International License.

To view a copy of this license, visit <http://creativecommons.org/licenses/by/4.0/>.

© The Author(s) 2022. Published by Institute of Optics and Electronics, Chinese Academy of Sciences.

emitters in microcavities, nanoantennas, photonic crystals or meta-materials^{6–15}. This effect now is widely used in efficient laser operation¹, single-photon sources^{16–18}, fluorescent microscopy and nanoscale imaging^{19–21}, biological studies²², and spectroscopy²³.

One important property of nanoantennas is their ability to concentrate electromagnetic energy at the nanoscale. Plasmonic nanoantennas exhibits extraordinary surface plasmon resonances that create a highly localized electric field and increase photon local density of states, resulting in the enhancement of SE rate. However, the effect is accompanied by unwanted large losses due to strong metal absorption. In contrast, dielectric nanoantennas with high permittivity and supporting strong Mie resonances provide a potential to realize low loss manipulation of light scattering^{24–26}. Recent works showed that dielectric nanosphere can have both electric dipole (ED) and magnetic dipole (MD) resonance modes simultaneously excited inside the same particle upon the plane wave illumination^{26–28}. It provides a canonical example of dielectric antennas that can be used to enhance MD emission. Researchers have also calculated the contributions of different multipoles, including ED, MD and electric quadrupole (EQ) mode to the optical scattering cross sections for Si nanoparticles with different sizes in the visible to infrared range^{26,29,30}.

ED emission can be enhanced through plasmonic and dielectric nanoantenna^{31–33}, while MD emission can be enhanced through split ring resonance³⁴, diabol antenna³⁵, dielectric antenna^{36–38}, and sandwiched structure^{39,40}. Several researchers have shown to enhance both ED and MD emission by silicon nanosphere or plasmonic antenna^{41,42}, and others have also shown to enhance ED, MD and EQ emission by the plasmonic sandwiched structure⁴³. However, the enhancement factor among the emitters has different magnitudes that are not always satisfactorily large. Moreover, plasmonic nanostructures suffer from high dissipation loss compared with dielectric nanostructures. On the other hand, it has been well established that dielectric nanospheres of sufficiently large size can exhibit the ED, MD and EQ resonance modes upon the plane wave illuminated, and they have been used to enhance the MD emission²⁶, or to enhance the ED and MD emission with different nanospheres sizes respectively,³⁰ or to realize the excitation enhancement in two-photon-induced and three-photon-induced absorption⁴⁴. However, it remains unclear whether these dielectric nanospheres or other more general dielectric

nanostructures can be utilized to simultaneously enhance the spontaneous emission from ED, MD and EQ with very low loss and with large magnitude.

In this paper, we handle this issue and systematically investigate controlling spontaneous emission of ED, MD and EQ emitters by a designed silicon dielectric cuboid nanoantenna. We first study the resonance modes in this dielectric nanostructure upon three different orientations of incident plane wave. Then we carefully calculate and analyze the Purcell factor of ED, MD and EQ emitter with different orientations located at the center of the cuboid nanoantenna. We find that the silicon cuboid nanoantennas can simultaneously enhance ED, MD and EQ emission by a large magnitude. Finally, we discuss the relationship between the resonance modes in the dielectric cuboid nanoantenna and the Purcell factor of an ED, MD or EQ emitter located at the center of the nanoantenna.

Structure and method

The structure we consider is shown schematically in Fig. 1. The nanoantenna is made of two silicon patches, separated with a gap side G of 20 nm. The width W and length L of the silicon cuboid is 220 nm and 40 nm respectively. A plane wave incident light is used to investigate the scattering properties of the structure. After that, an emitter is placed at the center of the nanogap antenna. With the assistance of the nanoantenna, the radiation power of the emitter can be significantly enhanced compared with the situation when the emitter is placed in free space.

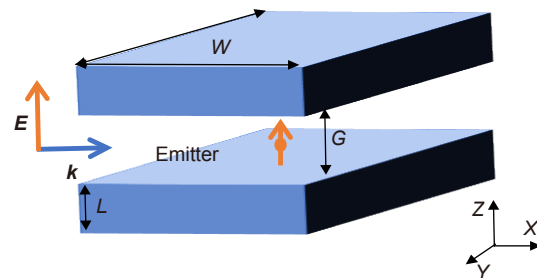


Fig. 1 | Schematic of the silicon cuboid dielectric optical nanoantenna.

The whole structure is simulated by finite element method. In all the calculations, the cuboid nanoantenna is placed in vacuum. The refractive index of silicon is fitted from experimental data from ref.⁴⁵ and then the permittivity of silicon is calculated from the refractive index $\epsilon_r = (n - ik)^2$. In order to investigate the scattering

properties of the structure, we have first calculated the scattering cross sections when the structure is impinged by different polarized plane waves. The scattering cross section is calculated as

$$\sigma_{\text{sca}} = \frac{P_s}{I_0}, \quad (1)$$

where P_s is the total scattered power and I_0 is the intensity of incident plane wave. To explore the modification of the SE rate for ED, MD and EQ emitters located in the gap of cuboid nanoantenna, we use the Purcell factor, which is defined as the ratio of the SE rate with structure (γ) and the SE rate without structure (γ_0)⁴⁶. The enhancement of the SE rate can be equivalently calculated from the power normalized to the case in vacuum⁴⁷. The total decay rate γ of the emitter includes both the radiative part γ_r and the nonradiative part γ_{nr} due to absorption. To this end, the total power P can be separated into the radiating power P_{rad} and the absorption power (due to material loss of silicon) P_{abs} . Therefore, the Purcell factor of the radiation decay rate enhancement part in this paper is,

$$F_p^r = \frac{\gamma_r}{\gamma_0} = \frac{P_{\text{rad}}}{P_0}, \quad (2)$$

where P_0 stands for the power radiated to the far field by the reference emitter in vacuum. By using finite element analysis, we can now evaluate the radiation power to obtain the Purcell factors of ED, MD and EQ emission.

Analysis of resonance modes in nanoantenna

We first explore the scattering properties of the silicon nanoantenna upon electromagnetic excitation by plane wave illumination. This will reveal its electromagnetic resonances and provide information on its interactions with ED, MD, and EQ emitter. We consider three different polarized plane waves, calculate and show the corresponding scattering cross sections in Fig. 2(a–c), respectively. In the calculated scattering spectrum, a strong MD resonance (MD₁ mode) at 743 nm, an ED resonance (ED₁ mode) at 637 nm, and an EQ resonance (EQ₁ mode) at 531 nm are observed with the plane wave propagating along the negative y direction and with the E_x polarization, as seen in Fig. 2(a). We also find an ED resonance (ED₂ mode) at 481 nm and an MD resonance (MD₂ mode) at 556 nm upon the plane wave illuminated along the negative y direction and with the E_z polarization, as found in Fig. 2(b). When the structure is impinged by a plane wave along the z direction and with

the E_y polarization, an ED resonance (ED₃ mode) and an EQ resonance (EQ₂ mode) are found at 656 nm and 541 nm, respectively, as seen in Fig. 2(c). These resonance modes are typically expected for a high-index dielectric nanoparticle^{26,27}.

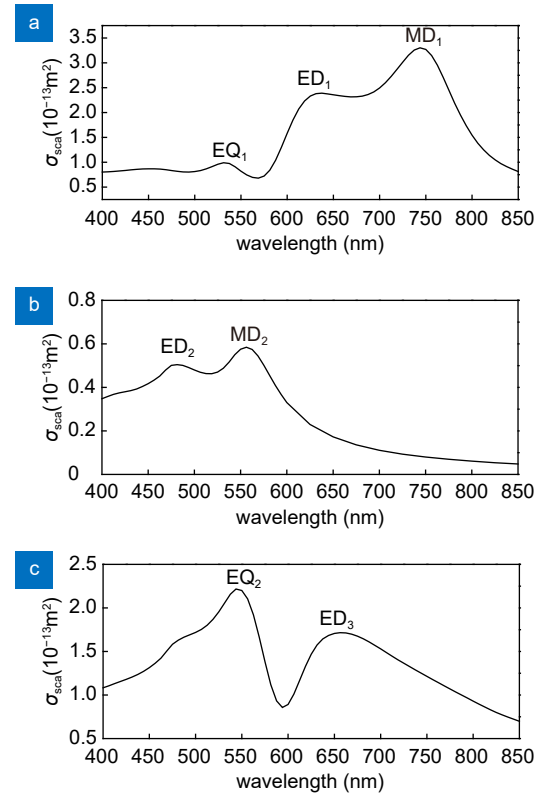


Fig. 2 | Calculated scattering cross section for a silicon cuboid nanoantenna with the width W of 220 nm, the length L of 40 nm, and the gap size G of 20 nm upon the plane wave illumination under different plane wave incidence directions and polarizations as follows: (a) Negative y -axis incidence direction and E_x polarization, (b) negative y -axis incidence direction and E_z polarization, and (c) positive z -axis incidence direction and E_y polarization.

In order to have deeper insight into the resonance modes and confirm the validity of the above classification against them, the polarization charge distributions and the electromagnetic field distribution at these resonance modes on the top or side view of the silicon nanoantenna are calculated and shown in Figs. 3–5. We have assumed that the incident electric field \mathbf{E} has an amplitude of 1 V/m. All the electromagnetic fields \mathbf{E} and \mathbf{H} are normalized to those of the incident fields, and the polarization charge densities ρ are all in unit of 10^{-3} C/m³.

The red and blue color represents positive and negative polarization charges, respectively. We can see from Fig. 3(a) that the positive and negative polarization

charges at the ED₁ resonance intensively, and mainly distribute on the two YZ end surfaces of silicon patches; from Fig. 3(e) we see that they are intensively concentrated at the two XZ end surfaces of silicon patches at the ED₃ resonance; while from Fig. 3(c) we see that they mainly distribute on the two inner XY surfaces of silicon patches at the ED₂ resonance. These distribution features are consistent with the polarization state of the incident plane wave, which is along the *x*-axis, *y*-axis, and *z*-axis for the ED₁, ED₃, and ED₂ modes, respectively. To further illustrate these three ED resonance modes, we plot in Fig. 3(b), 3(d) and 3(f) the electric field distribution at the resonance wavelength and in the corresponding cutting cuboid plane. The electric field intensity of the ED₁, ED₂, and ED₃ modes exhibits a dipole distribution at XZ, XZ and YZ cutting plane respectively. Furthermore, the electric field direction of these three ED modes is in the negative *x* direction, negative *z* direction, and *y* direction, respectively. These features are consistent with the positive and negative polarization charges distribution profiles and the polarization direction plotted in Fig. 3(a), 3(c) and 3(e), which is along the *x*-axis, *z*-axis, and *y*-axis for the ED₁, ED₂, and ED₃ modes. The electric field intensity and direction both have a dipole distribution profile, which is similar to the distribution of ED emitter, and this once again confirms a resonating ED mode under the excitation of incident electromagnetic waves.

We can see from Fig. 4(a) that the positive and negative polarization charges at the EQ₁ resonance are concentrated alternately on the four corners of the XY plane of the silicon patches, while polarization charges of same sign distribute on the same diagonal of XY plane. This feature is similar to two electric dipoles in opposite directions distributing in the XY cutting plane. From Fig. 4(b) we see that the positive and negative polarization charges are concentrated alternately on the four inner corners of the YZ plane of the silicon patches at the EQ₂ resonance, while charges of same sign distribute on the same diagonal of YZ plane. This is similar to two opposite directed electric dipoles distributing in the YZ cutting plane. The corresponding electric field distributions at EQ₁ and EQ₂ resonances wavelengths are shown in Fig. 4(c) and 4(d). The electric field intensity of the EQ₁ and EQ₂ modes has a quadrupole distribution at the XY and YZ cutting plane, respectively. The electric field intensity distributions are consistent with the polarization charge distribution, which are alternately distributed in the XY and YZ cutting planes, respectively. The electric field direction of

EQ₁ resonance mode is oriented along the diagonal of the XY cutting plane, following the charges polarization direction plotted in Fig. 4(a).

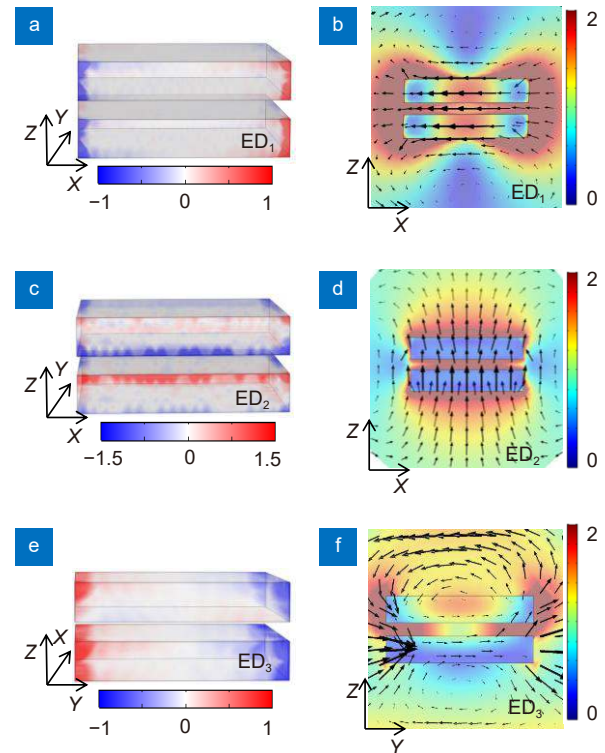


Fig. 3 | Polarization charge (ρ) distribution [panels (a), (c) and (e)] and electric field (\mathbf{E}) amplitude distribution [panels (b), (d) and (f), color plots] calculated on the specified cutting plane of the nanoantenna at the resonance wavelength of the ED₁, ED₂ and ED₃ mode shown in Fig. 2 respectively. Panel (b) is for the central XZ plane, panel (d) is for the central XZ plane, while panel (f) is for the central YZ plane of the cuboid nanoantenna. The black arrows show the direction of electric field and the length of the arrow denotes the field intensity.

Furthermore, the electric field direction of EQ₂ resonance mode also follows the charges polarization direction plotted in Fig. 4(b), orienting along the four sides of YZ cutting plane of silicon patches. The electric field intensity and direction in both cases have a quadrupole distribution to resemble the EQ resonance mode.

We can see from Fig. 5(a) that the positive and negative polarization charges at the MD₁ resonance are somewhat uniformly distributed at the whole edges of silicon patches surrounding the *z*-axis, while from Fig. 5(b) we see that they are somewhat uniformly distributed at the whole edges of silicon patches surrounding the *x*-axis at the MD₂ resonance. The corresponding distribution of magnetic field (\mathbf{H}) with both strength and direction, and electric polarization (\mathbf{P}) at the resonance wavelength are

calculated and plotted in Fig. 5 for further illustration. The electric polarization distribution, illustrated by arrows superimposed upon the magnetic field pattern in Fig. 5(c) and 5(d), shows a current loop flowing in the XY and YZ cutting planes, respectively, which is consistent with the polarization charges distribution. Thus, the magnetic field direction is oriented along the z -axis and x -axis for the MD₁ and MD₂ modes. As shown in Fig. 5(e) and 5(f), the magnetic field direction is pointing to the z -axis direction and x -axis direction. Furthermore, the magnetic field intensity and direction show a magnetic dipole feature. The fact that magnetic field has a dipole distribution and polarization shows a current loop flowing clearly indicates the occurrence of MD resonance mode excited by the incident electromagnetic wave at these two particular wavelengths.

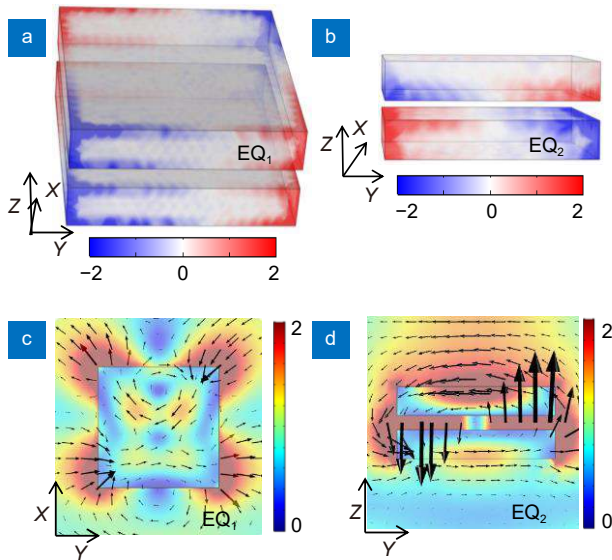


Fig. 4 | Polarization charge (ρ) distribution [panels (a) and (b)] and electric field (E) amplitude distribution [panels (c) and (d), color plots] calculated on the specific cutting plane of the nanoantenna at the resonance wavelength of EQ₁ and EQ₂ mode shown in Fig. 2, respectively. Panel (c) is for the central XY plane (i.e., the mid-gap plane), while panel (d) is for the central YZ plane of the cuboid nanoantenna. The black arrows show the direction of electric field and the length of the arrow denotes the field intensity.

Comparing the magnitude of polarization charge density of the ED, MD, and EQ resonance modes as displayed in Figs. 3–5, we find that the ED resonances modes have lower density than that of the EQ and MD resonances modes, while the EQ and MD resonance modes have similar polarization charge density. All these features can help to reveal the extent of Purcell factor for an ED, MD, or EQ emitter that are situated at the center of the cuboid nanoantenna structure discussed above,

which supports three types of resonance modes, simultaneously. On the other hand, our calculations have shown that although silicon has nonzero absorption coefficient, the absorption cross section is much smaller than the scattering cross section for the silicon structure, while the absorption cross section is comparable to the scattering one for the silver structure in the visible range (data not shown here). Therefore, the current silicon dielectric nanoantenna structure is superior to plasmonic structure in terms of absorption loss and dissipation. In addition, one can also use other non-absorptive materials such as TiO₂ to construct nanoantenna to further reduce absorption loss and dissipation.

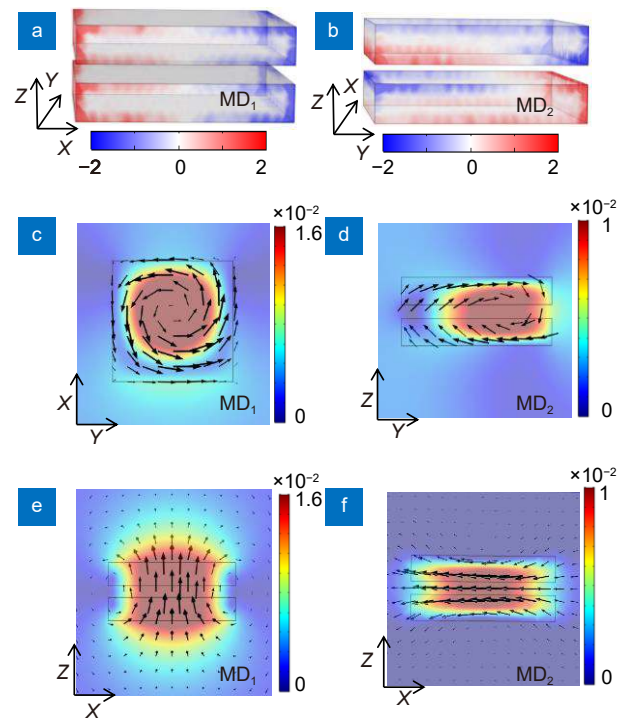


Fig. 5 | Polarization charge (ρ) distribution [panels (a) and (b)] and magnetic field (H) amplitude distribution [panels (c), (d), and (e), (f), color plots] calculated on the specific cutting plane of the nanoantenna at the resonance wavelength of MD₁ and MD₂ mode shown in Fig. 2, respectively. Magnetic field calculated on the cutting plane at the MD resonances [panels (c)–(f)]. Panel (c) is for the central XY plane (i.e., the mid-gap plane), panel (d) is for the central YZ plane, while panel (e) and (f) are for the central XZ plane of the cuboid nanoantenna. The black arrows superimposed in panels (c) and (d) show the direction and strength of magnetic field, while in panels (b) and (c) they illustrate the electric polarization (P) distribution (and thus the polarized electric current j distribution).

Analysis of radiation enhancement of emitter

Having characterized the ED, MD and EQ resonance

modes upon the plane-wave excitation, we now study the Purcell factor for an ED, MD, or EQ emitter situated at the center of the same cuboid nanoantenna structure. We have set that the ED have their dipole moment orientation parallel to the z -axis, the MD emitters have their dipole moment orientation parallel to the z -axis or x -axis, while the EQ emitter has an orientation within the YZ plane or XY plane. The simulation results of the Purcell factor spectrum, i.e., Purcell factor as a function of radiation wavelength, are shown in Fig. 6. One can see clearly that the spontaneous emission rate of the three types of emitters can be enhanced simultaneously by the cuboid nanoantenna. It is observed from Fig. 6(a) that the Purcell factor reaches a peak value of 18 at 475 nm for the ED emitter when it has a dipole moment orientation parallel to the z -axis. This resonance wavelength fits with the resonance wavelength of the ED₂ mode (481 nm) investigated above in Fig. 2(b). The excitation configuration of plane wave investigated in Fig. 2(b), propagating along the negative y direction and with E_z polarization, is similar to the configuration for this orientation of point ED emitter. In contrast, an ED emitter with a dipole moment orientation parallel to the x -axis (or y -axis) is hard to get its emission by the cuboid nanoantenna.

We can see from Fig. 6(b) that the Purcell factor reaches a peak value of 150 at 750 nm for the MD emitter when it has a dipole moment orientation parallel to the z -axis, while the Purcell factor reaches a peak value of 38 at 556 nm for the MD emitter oriented parallel to the x -axis, as seen from Fig. 6(c). These two resonance wavelengths are consistent with the resonance wavelength of MD₁ and MD₂ modes as displayed in Fig. 2(a) and 2(b), which is 743 nm and 556 nm, respectively. From the discussion about the MD resonance modes above, the magnetic field direction is oriented along the z -axis and x -axis for the MD₁ and MD₂ modes, which is consistent with the magnetic dipole moment orientation investigated in Fig. 6(b) and 6(c), respectively. Through comparing the Purcell factor of these two MD emitters, we find that the emitter with the z -axis dipole moment orientation can better enhance the MD radiation when it is situated at the center of the cuboid nanoantenna.

It is observed from Fig. 7(d) that the EQ emitter Purcell factor spectrum reaches a maximum of 115 at wavelength 562 nm when the EQ emitter has an orientation within the YZ plane. The resonance wavelength is consistent with the EQ₂ resonance position at 541 nm

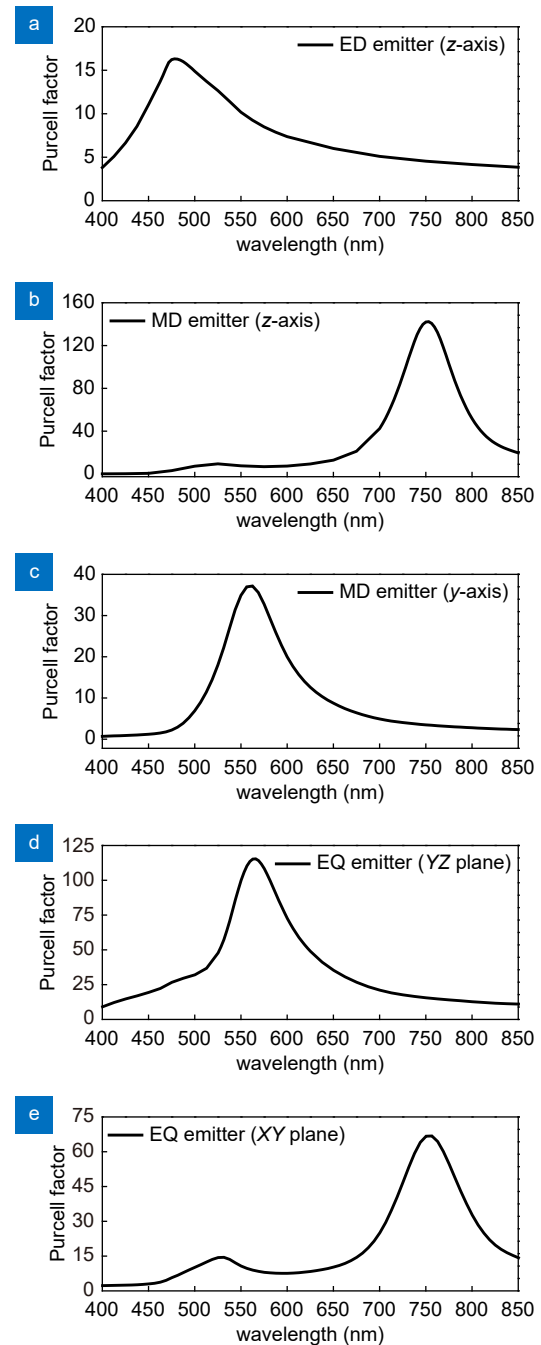


Fig. 6 | The radiative decay rate enhancement factors as a function of wavelength for (a) ED, MD [(b) and (d)], and EQ [(c) and (e)] emitter located at the center of the silicon cuboid nanoantenna. The ED emitter has an orientation parallel to the z -axis, the MD emitter has an orientation parallel to the z -axis (b) and x -axis (c), while the EQ emitter has an orientation within the YZ plane (d) and XY plane (e). The width of the cuboid is 220 nm, the length is 40 nm, and the gap size is 20 nm.

plotted in Fig. 2(c). From the discussion about the EQ₂ mode above, the polarization charge distribution is similar to two oppositely directed electric dipoles distributing in the YZ cutting plane, which is consistent with the

quadrupole moment orientation of EQ emitter. Furthermore, we can see from Fig. 6(e) that the Purcell factor reaches a peak value of 13 at 531 nm and a peak value of 67 at 756 nm when the EQ emitter has an orientation within the XY plane. The resonance wavelength (531 nm) is consistent with the resonance wavelength of EQ₁ mode (531 nm) plotted in Fig. 2(a). From the discussion about the EQ₂ mode above, the polarization charges distribution is similar to two opposite directed electric dipoles distributing in the XY cutting plane, which is consistent with the quadrupole moment orientation of EQ emitter. The second peak value of Purcell factor spectrum (at 756 nm) is matching well with the resonance wavelength of MD₁ mode. This indicates that the Purcell factor spectrum at 756 nm is possibly affected by the MD₁ mode and the EQ emitter at this wavelength has much possibility to excite the MD₁ mode because of their similarity in major profile of polarization charge distribution. Through comparing the Purcell factor of these two EQ emitters, we find that the emitter with a quadrupole moment orientation within the XY plane can better improve the EQ radiation by situating it at the center of the cuboid nanoantenna.

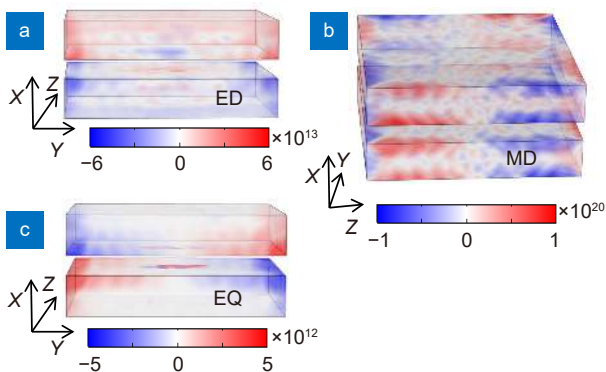


Fig. 7 | The polarization charge distribution for (a) an ED point emitter oscillating at 475 nm, (b) a MD point emitter oscillating at 750 nm, and (c) an EQ point emitter oscillating at 556 nm. All the emitters are located at the center of the silicon cuboid nanoantenna.

Now we can see that the Purcell factor spectrum of an ED, EQ or MD emitter with specific orientation parallel to z -axis, within the YZ plane, and parallel to z -axis can reach a high maximum value of 18, 115 and 150, respectively for a radiation wavelength distributed at 475, 562, and 750 nm, all within the visible range. The Purcell factor of MD and EQ emitter has the same order of magnitude, while they are one order of magnitude larger than that of the ED emitter. This is consistent with the feature of polarization charge density at the ED, MD and

EQ resonance modes, where we have seen that the polarization charge density at ED resonances is lower than the polarization charge density at EQ and MD resonances, while the latter two have similar density. Therefore, it can be further confirmed that the intensity and wavelength of ED, MD and EQ resonances modes existing in the cuboid nanoantenna do determine the major profile of the Purcell factor spectrum of these emitters.

In order to further illustrate the above connection deeply, the polarization charges distribution at the several typical resonance wavelengths of the Purcell factor spectrum is calculated and plotted in Fig. 7. The polarization charge densities are all in unit C/m^3 . When an ED emitter is situated at the center of the cuboid nanoantenna and its orientation is parallel to z -axis, as displayed in Fig. 7(a), the positive and negative charges respectively distribute on each patch of the structure along the z -axis for an oscillating wavelength of 475 nm, which is consistent with the polarization charges distribution at ED₂ resonance mode displayed in Fig. 3(c). Furthermore, as shown in Fig. 7(b), the positive and negative charges are alternately distributed at the whole edges of silicon patches surrounding the z -axis for an MD emitter oriented parallel to z -axis for an oscillating wavelength of 750 nm, which is similar to the polarization charges at MD₂ resonance mode displayed in Fig. 5(a), where they are somewhat uniformly distributed at the whole edges of silicon patches surrounding the z -axis. As plotted in Fig. 7(c), the positive and negative polarization charges at the resonance wavelength (556 nm) for an EQ emitter situating at the center of the cuboid nanoantenna and having an orientation within the YZ plane are concentrated alternately on the four inner corners of the YZ plane of the silicon patches, while charges of same sign distribute on the same diagonal of YZ plane. This distribution feature is consistent with the polarization charges distribution at EQ₂ resonance mode plotted in Fig. 4(b). It is similar to two oppositely directed electric dipoles distributed in the YZ cutting plane, and this feature is well consistent with the orientation of EQ emitter. The above analyses on the polarization charge distribution profile once again confirm the excitation and radiation of the ED, MD, and EQ resonance modes as the physical origin of large Purcell factors simultaneously occurring in this silicon cuboid nanoantenna.

Conclusion

In summary, we have identified the ED, MD and EQ resonant modes existing in a silicon dielectric cuboid

nanoantenna that is excited by incident plane wave with different polarized states through investigating systematically the scattering cross section, polarization charge distribution, and electromagnetic field distribution of this antenna. We have found that such a silicon cuboid nanoantenna can simultaneously enhance ED, MD and EQ emission with much less absorption loss compared with more popular scheme of plasmonic structure nanoantenna. We have calculated the Purcell factor spectrum of an ED, MD or EQ emitter with different moment orientation located at the center of the dielectric cuboid nanoantenna. The enhancement factor can reach a high maximum value of 18, 150 and 115, respectively for a radiation wavelength distributed at visible range as 475 nm, 750 nm, and 562 nm with specific moment orientation. Moreover, the resonance wavelength of the Purcell factor spectrum is consistent with that of the resonance modes with similar orientation. The fact that the resonance wavelength and intensity of the Purcell factor spectrum are determined by the resonance modes in the dielectric cuboid nanoantenna clearly indicate that the radiation power of these emitters is enhanced via the excitation of the corresponding ED, MD, or EQ resonance modes as a secondary radiation source (might be called synthetic emitter) with a much larger effective moment. This feature has been further confirmed by analyzing the polarization charge distribution excited by these emitters. We expect that our theoretical results might help to deeply explore and design the dielectric nanoantenna as an ideal candidate to control ED, MD and EQ emission simultaneously with very small loss in the visible range that might be superior than the more popular scheme of plasmonic nanoantenna.

References

- Kinkhabwala A, Yu ZF, Fan SH, Avlasevich Y, Müllen K et al. Large single-molecule fluorescence enhancements produced by a bowtie nanoantenna. *Nat Photonics* **3**, 654–657 (2009).
- Noginov MA, Zhu G, Belgrave AM, Bakker R, Shalaev VM et al. Demonstration of a spaser-based nanolaser. *Nature* **460**, 1110–1114 (2009).
- Oulton RF, Sorger VJ, Zentgraf T, Ma RM, Gladden C et al. Plasmon lasers at deep subwavelength scale. *Nature* **461**, 629–632 (2009).
- Shambat G, Ellis B, Majumdar A, Petykiewicz J, Mayer MA et al. Ultrafast direct modulation of a single-mode photonic crystal nanocavity light-emitting diode. *Nat Commun* **2**, 539 (2011).
- Rogobete L, Kaminski F, Agio M, Sandoghdar V. Design of plasmonic nanoantennae for enhancing spontaneous emission. *Opt Lett* **32**, 1623–1625 (2007).
- Noginov MA, Li H, Barnakov YA, Dryden D, Nataraj G et al. Controlling spontaneous emission with metamaterials. *Opt Lett* **35**, 1863–1865 (2010).
- Lodahl P, Van Driel AF, Nikolaev IS, Iman A, Overgaag K et al. Controlling the dynamics of spontaneous emission from quantum dots by photonic crystals. *Nature* **430**, 654–657 (2004).
- Liu J, Shi MQ, Chen Z, Wang SM, Wang ZL et al. Quantum photonics based on metasurfaces. *Opto-Electron Adv* **4**, 200092 (2021).
- Vahala KJ. Optical microcavities. *Nature* **424**, 839–846 (2003).
- Novotny L, Van Hulst N. Antennas for light. *Nat Photonics* **5**, 83–90 (2011).
- Schuller JA, Barnard ES, Cai WS, Jun YC, White JS et al. Plasmonics for extreme light concentration and manipulation. *Nat Mater* **9**, 193–204 (2010).
- Bharadwaj P, Deutsch B, Novotny L. Optical antennas. *Adv Opt Photonics* **1**, 438–483 (2009).
- Englund D, Fattal D, Waks E, Solomon G, Zhang BY et al. Controlling the spontaneous emission rate of single quantum dots in a two-dimensional photonic crystal. *Phys Rev Lett* **95**, 013904 (2005).
- Poddubny A, Iorsh I, Belov P, Kivshar Y. Hyperbolic metamaterials. *Nat Photonics* **7**, 948–957 (2013).
- Beliaev LY, Takayama O, Melentiev PN, Lavrinenko AV. Photoluminescence control by hyperbolic metamaterials and metasurfaces: a review. *Opto-Electron Adv* **4**, 210031 (2021).
- Arcari M, Sollner I, Javadi A, Hansen SL, Mahmoodian S et al. Near-unity coupling efficiency of a quantum emitter to a photonic crystal waveguide. *Phys Rev Lett* **113**, 093603 (2014).
- Lodahl P, Mahmoodian S, Stobbe S. Interfacing single photons and single quantum dots with photonic nanostructures. *Rev Mod Phys* **87**, 347–400 (2015).
- Rao VSCM, Hughes S. Single quantum dot spontaneous emission in a finite-size photonic crystal waveguide: proposal for an efficient “on chip” single photon gun. *Phys Rev Lett* **99**, 193901 (2007).
- Michaelis J, Hettich C, Mlynek J, Sandoghdar V. Optical microscopy using a single-molecule light source. *Nature* **405**, 325–328 (2000).
- Ropp C, Cummins Z, Nah S, Fourkas JT, Shapiro B et al. Nanoscale imaging and spontaneous emission control with a single nano-positioned quantum dot. *Nat Commun* **4**, 1447 (2013).
- Frimmer M, Chen YT, Koenderink AF. Scanning emitter lifetime imaging microscopy for spontaneous emission control. *Phys Rev Lett* **107**, 123602 (2011).
- Venkatesh S, Badiya PK, Ramamurthy SS. Purcell factor based understanding of enhancements in surface plasmon-coupled emission with DNA architectures. *Phys Chem Chem Phys* **18**, 681–684 (2016).
- Lakowicz JR, Ray K, Chowdhury M, Szymanski H, Fu Y et al. Plasmon-controlled fluorescence: a new paradigm in fluorescence spectroscopy. *Analyst* **133**, 1308–1346 (2008).
- Popa BI, Cummer SA. Compact dielectric particles as a building block for low-loss magnetic metamaterials. *Phys Rev Lett* **100**, 207401 (2008).
- Kuznetsov AI, Miroshnichenko AE, Fu YH, Zhang JB, Luk'yanchuk B. Magnetic light. *Sci Rep* **2**, 492 (2012).
- Evlyukhin AB, Novikov SM, Zywiets U, Eriksen RL, Reinhardt C et al. Demonstration of magnetic dipole resonances of dielectric nanospheres in the visible region. *Nano Lett* **12**, 3749–3755 (2012).

- (2012).
27. Garcia-Etxarri A, Gómez-Medina R, Froufe-Pérez LS, López C, Chantada L et al. Strong magnetic response of submicron Silicon particles in the infrared. *Opt Express* **19**, 4815–4826 (2011).
 28. Kruk S, Kivshar Y. Functional meta-optics and nanophotonics governed by mie resonances. *ACS Photonics* **4**, 2638–2649 (2017).
 29. Evlyukhin AB, Reinhardt C, Chichkov BN. Multipole light scattering by nonspherical nanoparticles in the discrete dipole approximation. *Phys Rev B* **84**, 235429 (2011).
 30. Rocco D, Lamprianidis A, Miroshnichenko AE, De Angelis C. Giant electric and magnetic Purcell factor in dielectric oligomers. *J Opt Soc Am B* **37**, 2738–2744 (2020).
 31. Kühn S, Håkanson U, Rogobete L, Sandoghdar V. Enhancement of single-molecule fluorescence using a gold nanoparticle as an optical nanoantenna. *Phys Rev Lett* **97**, 017402 (2006).
 32. Anger P, Bharadwaj P, Novotny L. Enhancement and quenching of single-molecule fluorescence. *Phys Rev Lett* **96**, 113002 (2006).
 33. Esteban R, Teperik TV, Greffet JJ. Optical patch antennas for single photon emission using surface plasmon resonances. *Phys Rev Lett* **104**, 026802 (2010).
 34. Hein SM, Giessen H. Tailoring magnetic dipole emission with plasmonic split-ring resonators. *Phys Rev Lett* **111**, 026803 (2013).
 35. Mivelle M, Grosjean T, Burr GW, Fischer UC, Garcia-Parajo MF. Strong modification of magnetic dipole emission through diabolite nanoantennas. *ACS Photonics* **2**, 1071–1076 (2015).
 36. Li JQ, Verellen N, Van Dorpe P. Enhancing magnetic dipole emission by a nano-doughnut-shaped silicon disk. *ACS Photonics* **4**, 1893–1898 (2017).
 37. Feng TH, Xu Y, Liang ZX, Zhang W. All-dielectric hollow nanodisk for tailoring magnetic dipole emission. *Opt Lett* **41**, 5011–5014 (2016).
 38. Feng T, Zhang W, Liang ZX, Xu Y, Miroshnichenko AE. Isotropic magnetic purcell effect. *ACS Photonics* **5**, 678–683 (2018).
 39. Feng TH, Zhou Y, Liu DH, Li J. Controlling magnetic dipole transition with magnetic plasmonic structures. *Opt Lett* **36**, 2369–2371 (2011).
 40. Hu WL, Yi NB, Sun S, Cui L, Song QH et al. Enhancement of magnetic dipole emission at yellow light in optical metamaterials. *Opt Commun* **350**, 202–206 (2015).
 41. Albella P, Poyli MA, Schmidt MK, Maier SA, Moreno F et al. Low-Loss Electric and Magnetic Field-Enhanced Spectroscopy with Subwavelength Silicon Dimers. *J Phys Chem C* **117**, 13573–13584 (2013).
 42. Mi H, Wang L, Zhang YP, Zhao GT, Jiang RB. Control of the emission from electric and magnetic dipoles by gold nanocup antennas. *Opt Express* **27**, 14221–14230 (2019).
 43. Rusak E, Straubel J, Gladysz P, Göddel M, Kędziorski A et al. Enhancement of and interference among higher order multipole transitions in molecules near a plasmonic nanoantenna. *Nat Commun* **10**, 5775 (2019).
 44. Zhang CY, Xu Y, Liu J, Li JT, Xiang J et al. Lighting up silicon nanoparticles with Mie resonances. *Nat Commun* **9**, 2964 (2018).
 45. Li JQ, Verellen N, Vercruyse D, Bearda T, Lagae L et al. All-dielectric antenna wavelength router with bidirectional scattering of visible light. *Nano Lett* **16**, 4396–4403 (2016).
 46. Purcell EM. Spontaneous emission probabilities at radio frequencies. *Phys Rev* **69**, 681 (1946).
 47. Taminiau TH, Stefani FD, Van Hulst NF. Single emitters coupled to plasmonic nano-antennas: angular emission and collection efficiency. *New J Phys* **10**, 105005 (2008).

Acknowledgements

The authors are grateful for the financial support from National Key R&D Program of China (2018YFA 0306200), National Natural Science Foundation of China (11974119), Guangdong Innovative and Entrepreneurial Research Team Program Innovative and Entrepreneurial Talents.

Competing interests

The authors declare no competing financial interests.