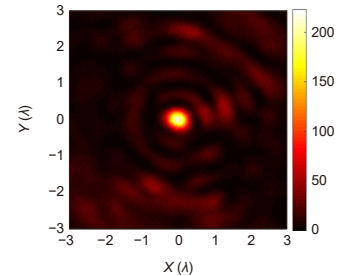


DOI: 10.12086/oe.2022.220258

超分辨弱旁瓣硅基超构透镜

张坤^{1,2}, 马子杰^{1,2}, 周毅^{1,2*}, 梁高峰^{1,2},
温中泉^{1,2}, 张智海^{1,2}, 尚正国^{1,2}, 陈刚^{1,2}¹重庆大学光电工程学院, 重庆 400044;²重庆大学光电技术及系统教育部重点实验室, 重庆 400044

摘要: 超表面是一种空间变化的超薄纳米结构, 在光学超分辨聚焦透镜或系统中已经得到广泛研究和应用。然而, 随着超构透镜聚焦光斑缩小, 不可避免产生大旁瓣, 限制了透镜视场和应用潜力。本文提出了一种设计大数值孔径 ($NA=0.944$) 超分辨弱旁瓣超构透镜的方法。针对波长 $\lambda=632.8$ nm 的圆偏振光, 基于硅基超表面 PB 相位调控, 实现了超分辨弱旁瓣点聚焦超构透镜。实验证明, 可以实现聚焦光斑半高全宽 $FWHM=0.45\lambda$, 小于衍射极限 0.53λ (衍射极限为 $0.5\lambda/NA$), 旁瓣比 Sidelobe Ratio (SR)=0.07。该透镜的应用有望实现超分辨光学器件或系统微型化、轻量化和集成化。

关键词: 超分辨; 弱旁瓣; 超表面; 超构透镜**中图分类号:** O436.3**文献标志码:** A

张坤, 马子杰, 周毅, 等. 超分辨弱旁瓣硅基超构透镜 [J]. 光电工程, 2022, 49(11): 220258

Zhang K, Ma Z J, Zhou Y, et al. Silicon-based super-resolution metalens with weak sidelobe[J]. *Opto-Electron Eng*, 2022, 49(11): 220258

Silicon-based super-resolution metalens with weak sidelobe

Zhang Kun^{1,2}, Ma Zijie^{1,2}, Zhou Yi^{1,2*}, Liang Gaofeng^{1,2}, Wen Zhongquan^{1,2}, Zhang Zhihai^{1,2},
Shang Zhengguo^{1,2}, Chen Gang^{1,2}¹College of Optoelectronic Engineering, Chongqing University, Chongqing 400044, China;²Key Laboratory of Optoelectronic Technology and Systems Ministry of Education, Chongqing University, Chongqing 400044, China

Abstract: Metasurface is a spatially varying ultrathin nanostructure that has been widely studied and used in optical super-resolution focusing, either in lenses or in systems. However, with the decrease of the focal spot size of the metalens, large sidelobes are inevitably generated, limiting the field of view and potential applications of the lens. In this paper, a method for producing super-resolution metalens with a large numerical aperture ($NA=0.944$) and weak sidelobe is presented. For a circularly polarized light with the wavelength of $\lambda=632.8$ nm, a super-resolution point-focusing with a weak sidelobe is realized based on PB phase regulation of silica-based metasurface. Experimental results show that the FWHM (full-width at half maximum) of our focusing spot is 0.45λ , which is less than the diffraction limit of 0.53λ (the diffraction limit is $0.5\lambda/NA$), and the sidelobe ratio (SR) is 0.07. Our proposed super-

收稿日期: 2022-10-11; 收到修改稿日期: 2022-11-01

基金项目: 国家自然科学基金资助项目 (61927818, 61575031); 国家重点基础研究发展计划资助项目 (2013CBA01700)

*通信作者: 周毅, yi_zhou@cqu.edu.cn。

版权所有©2022 中国科学院光电技术研究所

resolution metalens bears the potential to realize the miniaturization, lightweight and integration of super-resolution optical devices or systems.

Keywords: super-resolution; weak sidelobe; metasurface; metalens

1 引言

由于光学衍射的波动特性, 传统光学器件或系统无法实现完美成像, 分辨率仅为 $0.5\lambda/NA$ (λ 为工作波长, NA 为数值孔径)^[1]。利用具有高空间频率的倏逝波可以突破衍射极限, 但倏逝波一般存在于物体近场表面, 随远离物体距离的增加呈指数衰减。因此, 倏逝波所携带的物体精细信息无法传递到远场区域。近年来, 为了实现突破衍射极限, 研究人员开展了大量研究。如近场光学显微^[2], 完美透镜^[3-4], 双曲超透镜^[5-7], 荧光超分辨显微镜^[8-12]。然而, 这些方法要么需要在近场环境下工作, 要么需要荧光标记, 无法满足纯光学意义上远场超分辨成像需求。微球辅助显微技术将透明介质微球置于成像样品表面, 结合显微成像系统, 可以实现超分辨成像, 目前实验上已经获得 25 nm 分辨率^[13-15]。虽然上述研究工作都实现了超分辨, 但从远场光学器件层面看, 依然是衍射受限的。光学超振荡基于光波的远场传播特性, 为远场光学器件突破衍射极限提供了新的路径。光学超振荡是远场局域振荡频率大于最高傅里叶频率的现象, 理论上, 光学超振荡可以产生任意小的聚焦光斑, 光学超振荡判据为 $0.38\lambda/NA$ ^[16]。但是, 随着聚焦光斑减小, 主瓣周围会产生大旁瓣或边带。因此, 根据实际的超分辨光学器件或系统的应用场景, 聚焦光斑大小与旁瓣和边带需要做出相应的权衡^[17-18]。近年来, 基于光学超振荡思想, 研究人员开发了各种类型的超分辨光学透镜, 如基于振幅或相位掩膜版实现横向偏振超振荡聚焦^[19-23]和矢量光场超振荡聚焦透镜^[24-26]; 产生超振荡光针^[27-30]或超振荡无衍射光束^[31-33]。在参考文献 [33] 中, 作者提出了一种沿 y 轴对称弯月状振幅型掩膜版, 产生超振荡类贝塞尔光束, 基于干涉相消原理, 可实现沿 y 轴方向基本无旁瓣, 但器件本身非圆周对称, 聚焦光斑和旁瓣从设计上就不是圆周对称。超表面由一系列纳米结构超原子构成, 可以在亚波长尺度上对振幅、相位和偏振灵活操作, 对构造复杂超分辨光场特别适用。采用双折射超表面集成偏振转换功能, 可产生矢量超分辨聚焦光场^[34-36]。采用几何相位超表面^[37-38]可实现横向偏振深度超振荡聚焦^[39], 校正离轴

像差^[40]或抑制旁瓣^[41]。光学超分辨透镜应用于显微系统中显示出巨大的超分辨成像潜力。2012年, Rogers 等利用存在大边带超振荡透镜照明样品, 结合共焦显微系统, 依然在实验上实现了 $\lambda/6$ 的分辨本领^[42]。2016年, Qin 等为了解决超振荡透镜大边带或大旁瓣抑制视场问题, 提出了超临界透镜, 在共焦显微系统中利用超临界透镜照明样品, 实验上演示了 0.16λ 的分辨本领^[43]。

本文针对超分辨透镜大旁瓣限制器件视场和成像伪影问题, 提出了基于硅基^[44]超表面 PB 相位调控的超分辨弱旁瓣点聚焦超构透镜。基于电子束光刻和正胶刻蚀工艺制备超构透镜。利用大数值孔径显微探测系统对超构透镜光场进行探测^[45], 结果表明, 在波长 $\lambda=632.8$ nm 圆偏振光入射下, 聚焦光斑半高全宽 $FWHM=0.45\lambda$, 小于衍射极限为 0.53λ (衍射极限为 $0.5\lambda/NA$), 旁瓣比 $SR=0.07$ 。

2 理论设计

图 1(a) 给出了 PB 相位超原子示意图。图中显示, 超原子由石英玻璃 (SiO_2) 基底和长条形无定形硅 ($\alpha\text{-Si}$) 两种材料组成; P 、 L_x 、 L_y 和 H 分别表示硅基超原子周期、长、宽和高, 优化超原子长、宽、高可以实现高效振幅透率; 超原子通过旋转实现相位调控, 超原子不同旋向 θ_i , 理论可实现 $\varphi_i=2\theta_i$ 相位调控能力; 图 1(b) 给出了基于硅基超表面 PB 相位调控的超构透镜聚焦示意图。透镜半径为 R_{ens} , 长条形超原子按周期网格环绕透镜中心排布, 周期网格中超原子根据透镜相位分布 $\varphi(r)$ 旋转不同角度 θ_i 。圆偏振光垂直入射到玻璃基底, 从玻璃基底穿出, 过硅基超表面, 网格周期不同旋向超原子改变入射光相位分布, 在焦平面位置精细相干, 产生弱旁瓣超分辨聚焦光斑。

本文基于矢量角谱衍射方法 (vectorial angular spectrum method, VASM)^[46]和粒子群优化算法^[47], 采用 32 值相位调控, 以圆偏振光作为入射光源, 设计弱旁瓣超分辨聚焦透镜。根据矢量角谱衍射方法, 光源偏振态为圆偏振光, $z=z_f$ 处衍射场的电场分量可由式 (1) 计算:

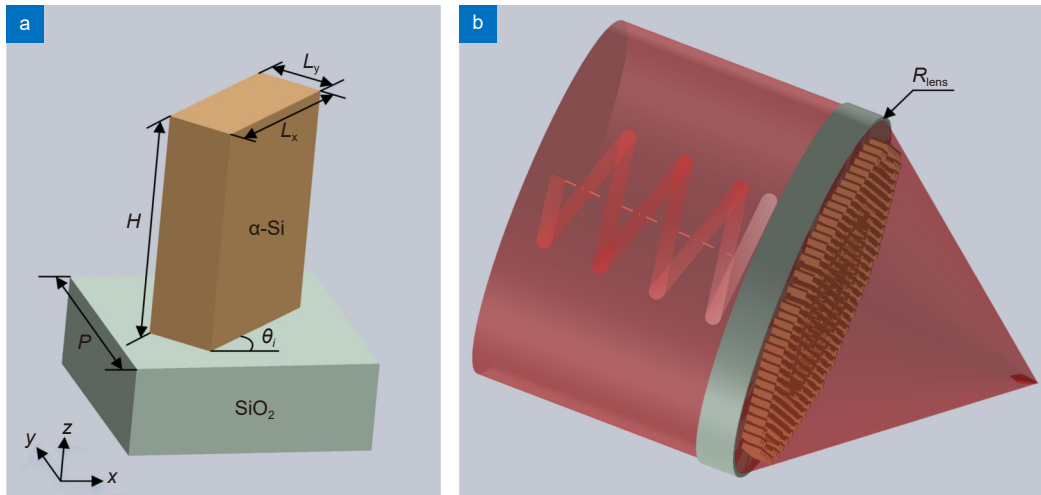


图 1 硅基超构透镜。(a) 硅基长条形超原子示意图；(b) 聚焦示意图

Fig. 1 Silicon-based metalens. (a) Schematic diagram of silicon-based metaatoms; (b) Schematic diagram of the focusing

$$\begin{cases}
 E_x(r, z_f) = \frac{1}{\sqrt{2}} \int_0^\infty A_{x,0}(\rho) \exp[j2\pi q(\rho)z_f] J_0(2\pi r\rho) 2\pi\rho d\rho \\
 E_y(r, z_f) = j \frac{1}{\sqrt{2}} \int_0^\infty A_{x,0}(\rho) \exp[j2\pi q(\rho)z_f] J_0(2\pi r\rho) 2\pi\rho d\rho \\
 E_z(r, \phi, z_f) = -\frac{j}{\sqrt{2}} \exp(j\phi) \cdot \int_0^\infty \frac{\rho}{q(\rho)} A_{x,0}(\rho) \exp[j2\pi q(\rho)z_f] J_1(2\pi r\rho) 2\pi\rho d\rho \\
 A_{x,0}(\rho) = \int_0^\infty t(r)g(r)J_0(2\pi r\rho) 2\pi r dr
 \end{cases}
 \quad (1)$$

其中： $E_x(r, z_f)$ ， $E_y(r, z_f)$ ， $E_z(r, \phi, z_f)$ 分别为圆偏振光

(x, y, z) 方向的电场； $g(r)$ 和 $t(r)$ 分别为入射电场的空间分布和器件透射函数； z_f 为计算光场离开器件表面距离； J_0 和 J_1 分别为零阶和一阶 Bessel 函数； $q(\rho) = \sqrt{1/\lambda^2 - \rho^2}$ 为波矢量的纵向分量。

为了详细说明弱旁瓣超分辨透镜设计过程，本文给出了优化流程图，如图 2 所示。设置透镜目标参数：波长 λ ，透镜半径 R_{lens} ，透镜焦距 z_f ，目标半高全宽 $FWHM_t$ ，目标旁瓣比 SR_t ，目标光强 I_t ，并随机产生 N 个透镜，使用式 (1) 计算每一个透镜焦平面光场，

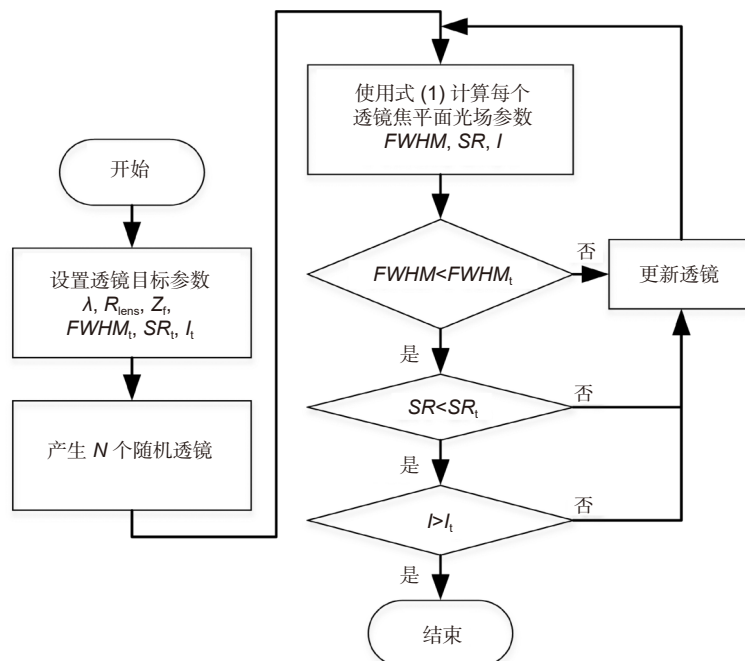


图 2 弱旁瓣超分辨透镜优化流程图

Fig. 2 Flowchart of the optimization process to achieve super-resolution focusing with weak sidelobes

通过迭代不断优化焦平面光场参数 $FWHM$, SR , I , 直到满足设计要求。

根据上述方法, 针对波长 $\lambda=632.8\text{ nm}$, 设定透镜半径 $R_{\text{lens}}=57\lambda$, 焦距为 $z_f=20\lambda$, 对应数值孔径 $NA=0.944$, 相应衍射极限为 0.53λ , 对透镜透射函数 $t(r)$ 进行优化设计。表 1 给出了透镜透射函数沿径向相位数 N_i , 相位数与相位分布关系为 $\varphi_i=2\pi N_i/32$ 。表中显示, 透镜包含 115 个周期环带, 周期 $P=315\text{ nm}$, i 表示周期环带序号, 相位数 N_i 从 0 到 31, 按 32 进制编号, 当相位数 $N_i=10, 11, \dots, 31$ 时, 相位数用 A, B, \dots , V 表示。通过迭代优化, 在焦平面位置实现弱旁瓣超分辨聚焦光斑。图 3 给出了弱旁瓣超分辨超构透镜的设计结果。图 3(a) 为焦平面光场二维分布, 图中显示, 中心存在一个亮度很强的聚焦光斑, 周围环绕着强度很弱的旁瓣, 按照焦平面上中心

$(3 \times FWHM)^2$ 大小区域内 ($FWHM$ 为聚焦光斑半高全宽) 光功率与透镜区域内入射光功率的比值定义聚焦效率^[48-49], 本文超构透镜的聚焦效率为 0.94%。图 3(b) 给出了过光斑中心的强度曲线, 图中显示, 中心主瓣半高全宽 $FWHM=0.43\lambda$, 最大旁瓣比 $SR=0.05$ 。图 3(c) 为沿 xz 传播面光场二维分布, 图中显示, 在 $z=15\lambda \sim 25\lambda$ 的 10λ 范围内, 存在 4 个焦深不同的聚焦光斑, 在设计焦距 $z_f=20\lambda$ 处存在一个相对较强光斑, 并且沿着 x 轴方向明显看出周围旁瓣强度很弱。图 3(d) 给出了沿 xz 传播面轴上聚焦光斑强度 (红色实线), 半高全宽 $FWHM$ (蓝色实线) 和旁瓣比 SR (绿色实线) 参数曲线。黑色和酒红色点划线分别表示衍射极限 ($0.5\lambda/NA$) 和超振荡判据 ($0.38\lambda/NA$)。图中显示, 轴上强度出现多个峰值, 在设计焦距 $z_f=20\lambda$ 处存在焦深为 1λ 的强度峰值。

表 1 超构透镜相位数 N_i
Table 1 Phase number of the metalens

环带序号	N_i
#01~#38	0059MTL9K000OG0M0904T0MOC08AKDS61ALLOG
#39~#76	4000C7CSFCEQIPQQM0F00GIN46A3C7JA30B2N7
#77~#115	07A02F5K2NC2B2J9H102070B00208I6N8RB0EUF

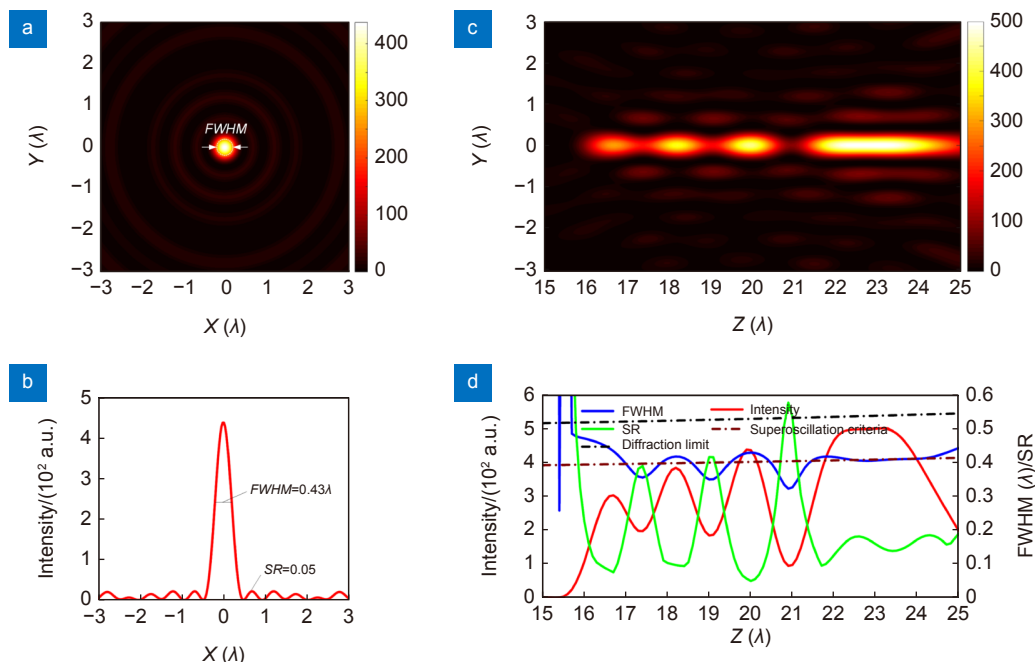


图 3 硅基超构透镜理论设计结果。(a) 焦平面光场二维分布; (b) 焦平面强度曲线; (c) xz 平面光场二维分布; (d) xz 平面轴上聚焦光斑强度 (红色实线), 半高全宽 $FWHM$ (蓝色实线) 和旁瓣比 SR (绿色实线) 参数曲线
Fig. 3 Theoretical results of silicon-based metalens. (a) Two-dimensional intensity distribution in the focal plane; (b) The corresponding intensity curve in the focal plane; (c) Two-dimensional intensity distribution on xz plane; (d) Intensity (red), $FWHM$ (blue), and SR (green) parameter on the xz plane

3 FDTD 仿真

为了进一步分析超分辨超构透镜聚焦光场, 基于硅基超表面, 利用软件 FDTD Solutions 对透镜进行仿真验证, 其中石英玻璃折射率参数为 $1.457+i0$ ($@632.8\text{ nm}$), 无定形硅长方形超原子尺寸为长 (L_x) \times 宽 (L_y) \times 高 (H)= $210\text{ nm}\times 90\text{ nm}\times 400\text{ nm}$, 折射率参数为 $3.0906+i0.00062$ ($@632.8\text{ nm}$)。图 4 给出了弱旁瓣超分辨超构透镜的 FDTD 仿真结果。图 4(a) 为焦平面光场二维分布, 图中显示, 相似于图 3(a), 外围旁瓣强度很弱, 环绕着一个中心亮斑。区别于焦平面光场完全圆周对称的理论计算结果, FDTD 仿真结果外围旁瓣沿圆周存在明暗变化, 这是由于超原子网格排布导致超表面透镜不严格圆周对称造成的。图 4(b) 给出了沿 x 轴 (红色) 和 y 轴 (黑色) 的强度曲线, 图中显示, 沿 x 轴方向半高全宽 $FWHM_x=0.433\lambda$, 旁瓣比 $SR_x=0.08$ 。沿 y 轴方向半高全宽 $FWHM_y=0.431\lambda$, 旁瓣比 $SR_y=0.09$ 。半高全宽与旁瓣比都略高于理论设计, 这是由于超原子旋转过程中振幅透过率起伏造成的。图 4(c) 给出了沿 xz 传播面光场二维分布, 图中显示, 在 $z=15\lambda\sim 25\lambda$ 的 10λ 范围内, 同样存

在 4 个焦深不同的聚焦光斑。图 4(d) 给出了沿 xz 传播面轴上强度 (红色实线), 半高全宽 $FWHM$ (蓝色实线) 和旁瓣比 SR (绿色实线) 参数曲线。黑色和酒红色点划线分别为衍射极限 ($0.5\lambda/NA$) 和超振荡判据 ($0.38\lambda/NA$)。图中显示, 轴上强度出现多个峰值, 在 $z=20\lambda$ 处存在焦深为 1.2λ 的强度峰值。

4 实验结果与分析

本文采用电子束光刻和正胶刻蚀工艺完成超构透镜制备。首先, $500\text{ }\mu\text{m}$ 厚石英玻璃基底分别通过食人鱼溶液 (浓硫酸 (H_2SO_4) 与 30% 双氧水 (H_2O_2) 以 3:1 混合) 和有机溶液 (丙酮或异丙醇) 超声清洗去除表面污渍; 使用 PECVD 工艺 (Sentech SI 500D, SENTECH Instruments GmbH) 在玻璃基底上表面沉积 400 nm 厚无定形硅薄膜; 之后使用磁控溅射工艺 (KJLC LAB18) 在无定形硅薄膜上沉积 50 nm 铝膜; 通过电子束光刻工艺 (Vistec EBPG 5000 plus ES, Vistec Electron Beam GmbH) 在光刻胶上完成图形成像, 并通过干法刻蚀工艺 (Sentech PTSA SI 500, SENTECH Instruments GmbH) 将图形转移到无定形硅薄膜, 最终完成弱旁瓣超分辨透镜制备。图 5(a) 给出

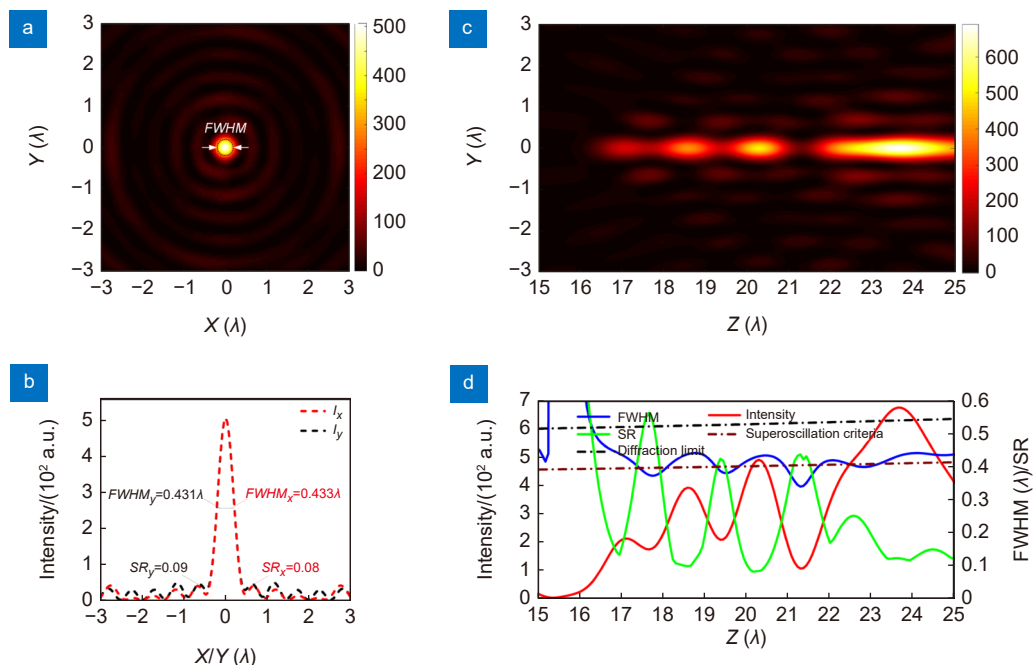


图 4 硅基超构透镜 FDTD 仿真结果。(a) 焦平面光场二维分布; (b) 焦平面强度曲线; (c) xz 平面光场二维分布; (d) xz 平面轴上聚焦光斑强度 (红色实线), 半高全宽 $FWHM$ (蓝色实线) 和旁瓣比 SR (绿色实线) 参数曲线

Fig. 4 FDTD simulation results of silicon-based metalens. (a) Two-dimensional intensity distribution in focal plane; (b) Focal plane intensity curve; (c) Two-dimensional intensity distribution on xz plane; (d) Focal spot intensity (red), FWHM (blue) and SR (green) parameter curves on the xz plane

了弱旁瓣超分辨透镜电镜图。

本文采用大数值孔径显微探测系统实验研究超分辨超构透镜光场分布。显微探测系统如图 5(b) 所示, 系统包含无限远物镜 (CF Plan 150×/0.95, Nikon), 纳米位移台 (No. 85-008, Edmund Optics), 筒镜 (ITL200, Thorlabs, Inc.), CCD 相机 (acA1920-25gm, Basler, Inc.)。物镜安装在纳米位移台上, 通过沿轴向移动, 捕获不同衍射面处光场信息。实验过程为氦氖激光 (波长 $\lambda=632.8$ nm, HNL210L, Thorlabs) 经过线偏振片 (WP25M-VIS, Thorlabs, Inc.) 和四分之一波片 (WPQ10M-633, Thorlabs, Inc.) 产生圆偏振光, 圆偏振光垂直入射到超构透镜上, 经过透镜的光场被显微探测系统捕获。图 6 给出了焦平面 $z_f=20\lambda$ 处光场分布。图 6(a) 为 xy 面光场二维分布, 中心存在聚焦亮斑, 周围有较弱旁瓣环绕, 并且中心亮斑和旁瓣都不完全圆周对称。过焦斑中心等间隔角度取 10 条强度曲线平均获得平均强度曲线 (红色虚线), 如图 6(b) 所示。

作为对比, 过聚焦中心沿 x 轴 (绿色虚线)、 y 轴 (蓝色虚线) 实验测试强度曲线和设计结果强度曲线 (黑色虚线) 也呈现在图 6(b) 中。从图中可以看出, 实验与设计吻合良好。沿 x 轴方向、 y 轴方向和平均强度实验测试结果半高全宽分别为 $FWHM_x=0.43\lambda$ 、 $FWHM_y=0.49\lambda$ 和 $FWHM_{ave}=0.45\lambda$; 旁瓣比分别为 $SR_x=0.13$ 、 $SR_y=0.16$ 和 $SR_{ave}=0.07$ 。实验测试结果的半高全宽和旁瓣比均略高于设计值, 这主要是由于硅基超表面制备误差和入射光源波前误差引起的。

为了详细研究弱旁瓣超分辨超构透镜光场分布, 沿传播面逐面捕获光场信息。图 7 给出了沿 xz 面光场分布。图 7(a) 显示, 沿传播面 $z=15\lambda\sim 25\lambda$ 的 10λ 范围内有多个聚焦光斑, $z_f=20\lambda$ 处强度最强。图 7(b)、7(c)、7(d) 分别给出了沿传播面实验与理论设计关于强度、半高全宽和旁瓣比的曲线对比。红色球表示实验数据, 绿色实线表示理论设计数据。图 7(b) 中强度分布显示, 实验光强分布与理论设计有差距, 但与理

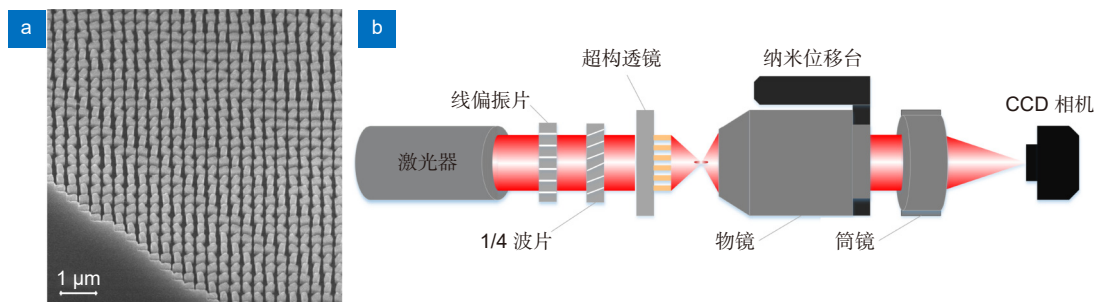


图 5 超构透镜电镜图与实验测试原理图。(a) 超构透镜电镜图; (b) 基于大数值孔径显微系统光场实验测试示意图
Fig. 5 The SEM and experimental schematic of metalens. (a) The SEM of the metalens; (b) Experimental schematic based on optical microscopy system with a large numerical-aperture objective

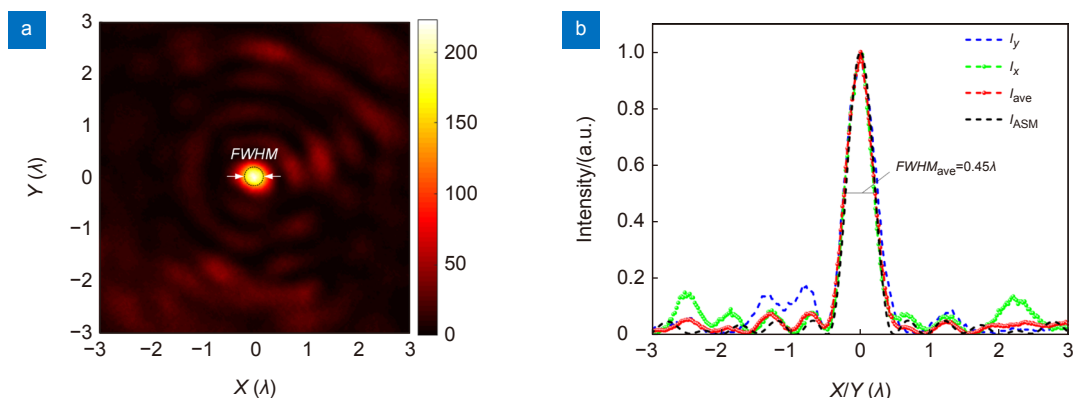


图 6 硅基超构透镜焦平面实验结果。(a) 焦平面光场二维分布; (b) 焦平面实验测试沿 x 轴 (绿色), y 轴 (蓝色) 强度曲线, 实验测试平均强度曲线 (红色) 和设计结果强度曲线 (黑色)

Fig. 6 Experimental results of silicon-based metalens on the focal plane. (a) Two-dimensional intensity distribution on the focal plane; (b) The corresponding intensity curves along the x -axis (green) and y -axis (blue), mean intensity curves (red) and the design results (black)

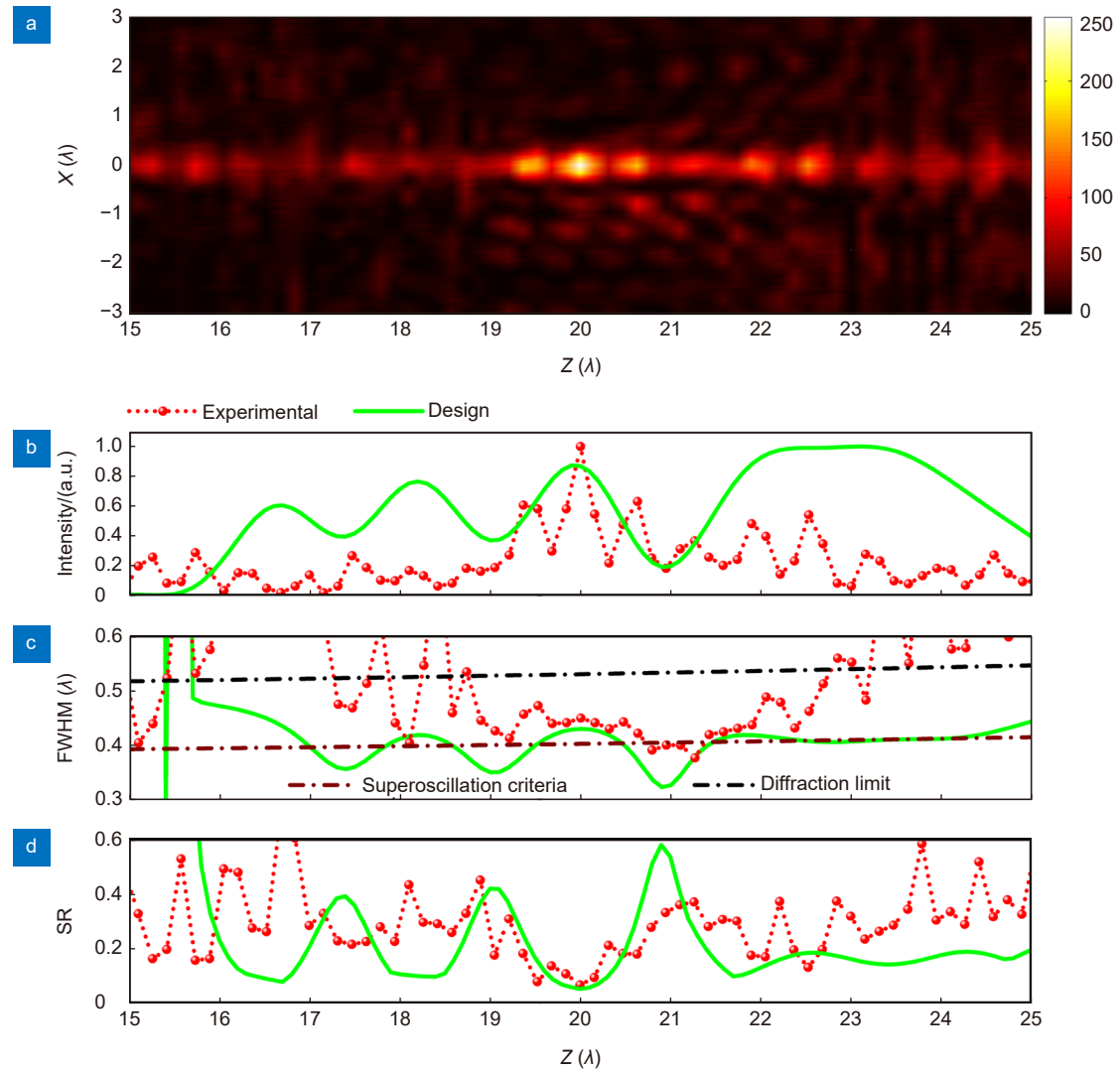


图7 硅基超构透镜 xz 平面实验 (红色) 与设计 (绿色) 结果。(a) xz 平面光场二维分布;
(b) 强度; (c) 半高全宽 $FWHM$; (d) 旁瓣比 SR

Fig. 7 Experimental (red) and design (green) results of silicon-based metalens on the xz plane. (a) Two-dimensional Intensity distribution on the xz plane; (b) The corresponding intensity; (c) $FWHM$; (d) Sidelobe ratio

论设计类似, 实验光强沿传播面同样具有多焦点特性, 只是相对于理论设计存在沿传播面压缩现象。 $z=20\lambda$ 处存在聚焦光斑, 满足设计要求, 焦深为 0.4λ , 小于理论设计焦深 1λ ; 图 7(c)、7(d) 显示, 在 $z=20\lambda$ 处附近, 半高全宽 $FWHM$ 与旁瓣比 SR 与理论设计基本相符, 略微增加。这主要是由于硅基超表面制备误差和入射光源波前误差造成。硅基超表面制备误差导致每个周期内超原子振幅和相位与理论值存在误差, 入射光源波前相对于理论设计的平面波存在振幅和相位的波动误差, 由于弱旁瓣超分辨超构透镜聚焦光场是精细相干的结果, 上述误差, 导致实验与理论设计存在差距。

5 结 论

综上所述, 本文针对随着聚焦光斑变小, 不可避免产生大旁瓣或边带, 限制了透镜视场问题, 根据聚焦斑尺寸与旁瓣相互平衡策略, 提出了大数值孔径 ($NA=0.944$) 超分辨弱旁瓣超构透镜设计方法。针对波长 $\lambda=632.8\text{ nm}$ 的圆偏振光, 基于硅基超表面 PB 相位调控, 设计并制备了半径 $R_{\text{ens}}=57\lambda$, 焦距 $z_f=20\lambda$ 的硅基超构透镜。实验结果显示, 在焦平面处, 聚焦光斑半高全宽 $FWHM=0.45\lambda$, 小于衍射极限 0.53λ (衍射极限为 $0.5\lambda/NA$), 旁瓣比 $SR=0.07$, 焦深 0.4λ 。实验结果半高全宽和旁瓣比略高于理论设计, 焦深仅为理论

设计四分之一, 这主要是超表面制备误差和入射波前误差造成。该透镜可应用于非标记透射式或反射式超分辨显微成像系统或光刻成像系统。可实现成像系统的微型化、轻量化和集成化。

参考文献

- [1] Abbe E. Beiträge zur theorie des mikroskops und der mikroskopischen wahrnehmung[J]. *Arch für Mikrosk Anat*, 1873, **9**(1): 413–468.
- [2] Betzig E, Trautman J K, Harris T D, et al. Breaking the diffraction barrier: optical microscopy on a nanometric scale[J]. *Science*, 1991, **251**(5000): 1468–1470.
- [3] Zhang X, Liu Z W. Superlenses to overcome the diffraction limit[J]. *Nat Mater*, 2008, **7**(6): 435–441.
- [4] Fang N, Lee H, Sun C, et al. Sub-diffraction-limited optical imaging with a silver superlens[J]. *Science*, 2005, **308**(5721): 534–537.
- [5] Liu Z W, Lee H, Xiong Y, et al. Far-field optical hyperlens magnifying sub-diffraction-limited objects[J]. *Science*, 2007, **315**(5819): 1686.
- [6] Lu D, Liu Z W. Hyperlenses and metalenses for far-field super-resolution imaging[J]. *Nat Commun*, 2012, **3**: 1205.
- [7] Zhu Y C, Chen X L, Yuan W Z, et al. A waveguide metasurface based quasi-far-field transverse-electric superlens[J]. *Opto-Electron Adv*, 2021, **4**: 210013.
- [8] Hell S W, Wichmann J. Breaking the diffraction resolution limit by stimulated emission: stimulated-emission-depletion fluorescence microscopy[J]. *Opt Lett*, 1994, **19**(11): 780–782.
- [9] Huang B, Wang W Q, Bates M, et al. Three-dimensional super-resolution imaging by stochastic optical reconstruction microscopy[J]. *Science*, 2008, **319**(5864): 810–813.
- [10] Gould T J, Verkhusa V V, Hess S T. Imaging biological structures with fluorescence photoactivation localization microscopy[J]. *Nat Protoc*, 2009, **4**(3): 291–308.
- [11] Schermelleh L, Carlton P M, Haase S, et al. Subdiffraction multicolor imaging of the nuclear periphery with 3D structured illumination microscopy[J]. *Science*, 2008, **320**(5881): 1332–1336.
- [12] Liu X W, Kuang C F, Hao X, et al. Fluorescent nanowire ring illumination for wide-field far-field subdiffraction imaging[J]. *Phys Rev Lett*, 2017, **118**(7): 076101.
- [13] Yan Y Z, Li L, Feng C, et al. Microsphere-coupled scanning laser confocal nanoscope for sub-diffraction-limited imaging at 25 nm lateral resolution in the visible spectrum[J]. *ACS Nano*, 2014, **8**(2): 1809–1816.
- [14] Zhou R, Wu M X, Shen F, et al. Super-resolution microscopic effect of microsphere based on the near-field optics[J]. *Acta Phys Sin*, 2017, **66**(14): 140702.
周锐, 吴梦雪, 沈飞, 等. 基于近场光学的微球超分辨显微效应[J]. *物理学报*, 2017, **66**(14): 140702.
- [15] Boneberg J, Leiderer P. Optical near-field imaging and nanostructuring by means of laser ablation[J]. *Opto-Electron Sci*, 2022, **1**(1): 210003.
- [16] Huang K, Ye H P, Teng J H, et al. Optimization-free superoscillatory lens using phase and amplitude masks[J]. *Laser Photon Rev*, 2014, **8**(1): 152–157.
- [17] Berry M V. Evanescent and real waves in quantum billiards and Gaussian beams[J]. *J Phys A Math Gen*, 1994, **27**(11): L391–L398.
- [18] Berry M V, Popescu S. Evolution of quantum superoscillations and optical superresolution without evanescent waves[J]. *J Phys A Math Gen*, 2006, **39**(22): 6965.
- [19] Qin F, Huang K, Wu J F, et al. Shaping a subwavelength needle with ultra-long focal length by focusing azimuthally polarized light[J]. *Sci Rep*, 2015, **5**: 9977.
- [20] Chen G, Li Y Y, Yu A P, et al. Super-oscillatory focusing of circularly polarized light by ultra-long focal length planar lens based on binary amplitude-phase modulation[J]. *Sci Rep*, 2016, **6**: 29068.
- [21] Chen G, Li Y Y, Wang X Y, et al. Super-oscillation far-field focusing lens based on ultra-thin width-varied metallic slit array[J]. *IEEE Photon Technol Lett*, 2016, **28**(3): 335–338.
- [22] Chen G, Zhang K, Yu A P, et al. Far-field sub-diffraction focusing lens based on binary amplitude-phase mask for linearly polarized light[J]. *Opt Express*, 2016, **24**(10): 11002–11008.
- [23] Yuan G H, Vezzoli S, Altuzarra C, et al. Quantum super-oscillation of a single photon[J]. *Light Sci Appl*, 2016, **5**(8): e16127.
- [24] Yu A P, Chen G, Zhang Z H, et al. Creation of sub-diffraction longitudinally polarized spot by focusing radially polarized light with binary phase lens[J]. *Sci Rep*, 2016, **6**: 38859.
- [25] Chen G, Wu Z X, Yu A P, et al. Generation of a sub-diffraction hollow ring by shaping an azimuthally polarized wave[J]. *Sci Rep*, 2016, **6**: 37776.
- [26] Wu Z X, Jin Q J, Zhang K, et al. Binary-amplitude modulation based super-oscillatory focusing planar lens for azimuthally polarized wave[J]. *Opto-Electron Eng*, 2018, **45**(4): 170660.
武志翔, 金启见, 张坤, 等. 基于二值振幅调控的角向偏振光超振荡聚焦平面透镜[J]. *光电工程*, 2018, **45**(4): 170660.
- [27] Rogers E T F, Savo S, Lindberg J, et al. Super-oscillatory optical needle[J]. *Appl Phys Lett*, 2013, **102**(3): 031108.
- [28] Yuan G H, Rogers E T F, Roy T, et al. Planar super-oscillatory lens for sub-diffraction optical needles at violet wavelengths[J]. *Sci Rep*, 2014, **4**: 6333.
- [29] Chen G, Wu Z X, Yu A P, et al. Planar binary-phase lens for super-oscillatory optical hollow needles[J]. *Sci Rep*, 2017, **7**(1): 4697.
- [30] Wang H T, Hao C L, Lin H, et al. Generation of super-resolved optical needle and multifocal array using graphene oxide metalenses[J]. *Opto-Electron Adv*, 2021, **4**(2): 200031.
- [31] Zhang S, Chen H, Wu Z X, et al. Synthesis of sub-diffraction quasi-non-diffracting beams by angular spectrum compression[J]. *Opt Express*, 2017, **25**(22): 27104–27118.
- [32] Wu Z X, Zhang K, Zhang S, et al. Optimization-free approach for generating sub-diffraction quasi-non-diffracting beams[J]. *Opt Express*, 2018, **26**(13): 16585–16599.
- [33] Hu Y W, Wang S W, Jia J H, et al. Optical superoscillatory waves without side lobes along a symmetric cut[J]. *Adv Photon*, 2021, **3**(4): 045002.
- [34] Zuo R Z, Liu W W, Cheng H, et al. Breaking the diffraction limit with radially polarized light based on dielectric metalenses[J]. *Adv Opt Mater*, 2018, **6**(21): 1800795.
- [35] Li Y Y, Cao L Y, Wen Z Q, et al. Broadband quarter-wave birefringent meta-mirrors for generating sub-diffraction vector fields[J]. *Opt Lett*, 2019, **44**(1): 110–113.
- [36] Wu Z X, Dong F L, Zhang S, et al. Broadband dielectric metalens for polarization manipulating and superoscillation focusing of visible light[J]. *ACS Photonics*, 2020, **7**(1): 180–189.
- [37] Genevet P, Capasso F, Aieta F, et al. Recent advances in

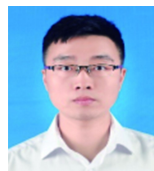
- planar optics: from plasmonic to dielectric metasurfaces[J]. *Optica*, 2017, 4(1): 139–152.
- [38] Liu S Q, Chen S Z, Wen S C, et al. Photonic spin hall effect: fundamentals and emergent applications[J]. *Opto-Electron Sci*, 2022, 1(7): 220007.
- [39] Yuan G H, Rogers K S, Rogers E T F, et al. Far-field superoscillatory metamaterial superlens[J]. *Phys Rev Appl*, 2019, 11(6): 064016.
- [40] Zhang Q, Dong F L, Li H X, et al. High-numerical-aperture dielectric metalens for super-resolution focusing of oblique incident light[J]. *Adv Opt Mater*, 2020, 8(9): 1901885.
- [41] Wen Z Q, He Y H, Li Y Y, et al. Super-oscillation focusing lens based on continuous amplitude and binary phase modulation[J]. *Opt Express*, 2014, 22(18): 22163–22171.
- [42] Rogers E T F, Lindberg J, Roy T, et al. A super-oscillatory lens optical microscope for subwavelength imaging[J]. *Nat Mater*, 2012, 11(5): 432–435.
- [43] Qin F, Huang K, Wu J F, et al. A supercritical lens optical label-free microscopy: sub-diffraction resolution and ultra-long working distance[J]. *Adv Mater*, 2017, 29(8): 1602721.
- [44] Wang Y L, Fan Q B, Xu T. Design of high efficiency achromatic metalens with large operation bandwidth using bilayer architecture[J]. *Opto-Electron Adv*, 2021, 4(1): 200008.
- [45] Zhou Y, Liang G F, Wen Z Q, et al. Recent research progress in optical super-resolution planar meta-lenses[J]. *Opto-Electron Eng*, 2021, 48(12): 210399.
周毅, 梁高峰, 温中泉, 等. 光学超分辨平面超构透镜研究进展[J]. *光电工程*, 2021, 48(12): 210399.
- [46] Deng D M, Guo Q. Analytical vectorial structure of radially polarized light beams[J]. *Opt Lett*, 2007, 32(18): 2711–2713.
- [47] Jin N B, Rahmat-Samii Y. Advances in particle swarm optimization for antenna designs: real-number, binary, single-objective and multiobjective implementations[J]. *IEEE Trans Antennas Propag*, 2007, 55(3): 556–567.
- [48] Wang Y J, Chen Q M, Yang W H, et al. High-efficiency broadband achromatic metalens for near-IR biological imaging window[J]. *Nat Commun*, 2021, 12(1): 5560.
- [49] Oscurato S L, Reda F, Salvatore M, et al. Shapeshifting diffractive optical devices[J]. *Laser Photonics Rev*, 2022, 16(4): 2100514.

作者简介



张坤 (1988-), 男, 博士研究生, 主要从事超分辨光学器件、微纳加工等研究。

E-mail: kunzhang@cqu.edu.cn

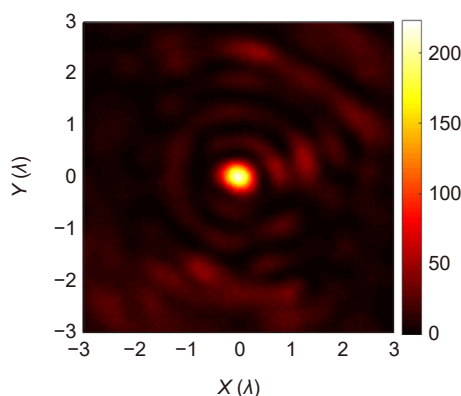


【通信作者】周毅 (1991-), 男, 博士, 毕业于中国科学院光电技术研究所, 后到爱尔兰国立大学做博士后工作, 现工作于重庆大学光电工程学院。主要从事光学超分辨显微成像技术和光学相干断层成像 (OCT) 研究。

E-mail: yi_zhou@cqu.edu.cn

Silicon-based super-resolution metalens with weak sidelobe

Zhang Kun^{1,2}, Ma Zijie^{1,2}, Zhou Yi^{1,2*}, Liang Gaofeng^{1,2}, Wen Zhongquan^{1,2},
Zhang Zhihai^{1,2}, Shang Zhengguo^{1,2}, Chen Gang^{1,2}



The experimental intensity distribution on the focal plane of our proposed metalens

Overview: Optical super-resolution lenses have shown great potential in super-resolution microscopic systems and nano-fabrication systems. With the decrease of the focusing spot of the super-resolution lens, it is inevitable that large sidelobes and sidebands will be generated, which will lead to a limited field of view and imaging artifacts. Therefore, when designing super-resolution optical devices, it is necessary to adopt a balanced strategy between focusing spot and side lobe according to the practical applications. Metasurface is a planar structure composed of nanoscale meta-atoms, which can flexibly regulate the amplitude, phase and polarization of the optical field, being beneficial to construct complex super-resolution optical fields. The PB phase meta-atom is comparatively easy to fabricate due to its simplicity. Using Finite-Difference Time-Domain (FDTD) solutions to optimize the size of the meta-atom, we can get a structure with high transmittance. By rotating the angle of the meta-atom, we can achieve linear phase control. The application of PB phase metasurface has been demonstrated in the field of super-resolution focusing devices with suppressed sidelobe. Based on the vector angular spectrum method and particle swarm optimization (PSO) algorithm, a super-resolution point focusing lens with a large numerical aperture and weak sidelobe is optimally designed with a 32-valued phase control at the wavelength of $\lambda=632.8$ nm. Based on the silicon-based PB phase metasurface, our metalens was fabricated by electron beam lithography and orthoplastic etching. The lens radius $R_{\text{lens}}=57\lambda$, focal length $z_f=20\lambda$, corresponding to the numerical aperture of $NA=0.944$. The optical field distribution of the super-resolution metalens was measured experimentally by a large-numerical-aperture microscopy system. The results show that, at the focal plane, the FWHM of the focal spot is 0.45λ , which is less than the diffraction limit of 0.53λ (the diffraction limit is $0.5\lambda/NA$), the side-lobe ratio SR is 0.07, and the depth of focus is 0.4λ . Our proposed metalens can achieve a small depth of focus, a weak sidelobe ratio, and super-resolution point focusing. Our proposed super-resolution metalens bears the potential to realize the miniaturization, lightweight, and integration of super-resolution optical devices or systems.

Zhang K, Ma Z J, Zhou Y, et al. Silicon-based super-resolution metalens with weak sidelobe[J]. *Opto-Electron Eng*, 2022, 49(11): 220258; DOI: 10.12086/oe.2022.220258

Foundation item: National Natural Science Foundation of China (61927818, 61575031), and China National Key Basic Research and Development Program (2013CBA01700).

¹College of Optoelectronic Engineering, Chongqing University, Chongqing 400044, China; ²Key Laboratory of Optoelectronic Technology and Systems Ministry of Education, Chongqing University, Chongqing 400044, China

* E-mail: yi_zhou@cqu.edu.cn